

# The Dark Swamp Rogaine

WARA Spring 12 Hour, 15 October 2011

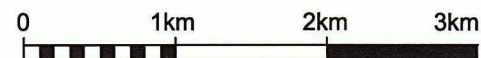


Department of Sport and Recreation



**LEGEND**

SCALE 1:50,000, 5 metre contour interval



- Building
- Continuations
- Control
- Contours
- Dam/Lake
- Swamp
- Plantation
- Fence
- Powerline
- Rock Surface
- Hash House
- Magnetic North Line
- Out of Bounds
- Road, Sealed
- Road, Major Gravel
- Track
- Watercourse
- Water Drop
- Patrolled Road

**SETTERS**

Jim Klinge  
Ricky Thackray

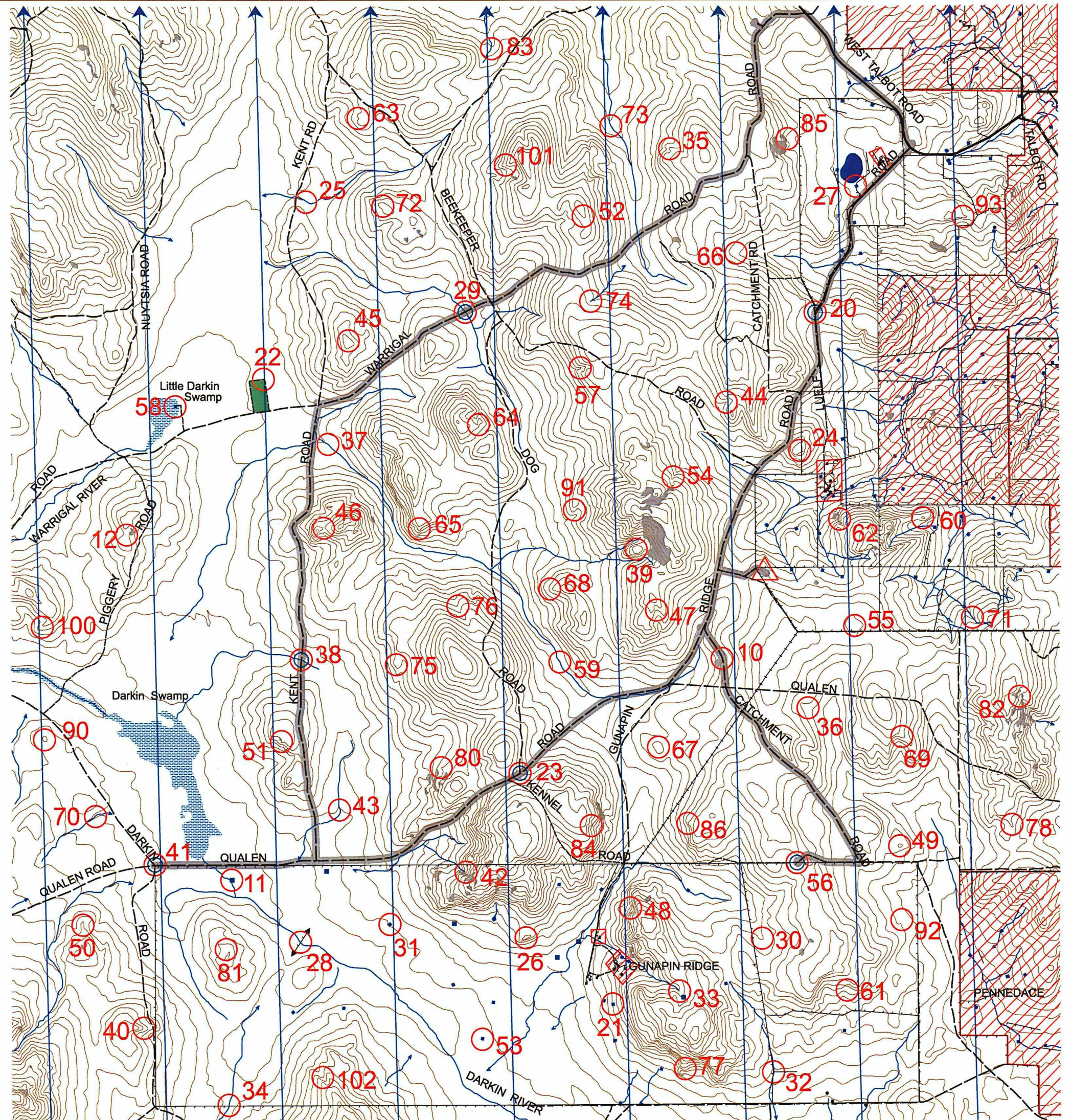
**VETTERS**

Sandra Batley  
Bruce Makin

**THANKS TO THE FARMERS**

Denis & Joanne Luef  
Rick Peplow

Data supplied by Landgate and used under copy licence 393/93.  
Possession of this map does not give right of entry to this area.  
Western Australian Rogaining Association Inc.  
This map was produced using OCAD.





## WARA 12 Hour Rogaine 15 October 2011

No.	Description	Points	No.	Description	Points	Important Information
10	The track bend	10	55	The knoll, broad	50	<b>Control Cards</b>
11	The dam, south side	10	56	The track bend, Water drop	50	
12	A saddle	10	57	A gully junction	50	From 09:30 Saturday
20	The track junction, 50 m @ 270°, Water drop	20	58	The dam, east side "The Dark Swamp"	50	<b>Briefing</b>
21	The eastern dam, SE corner	20	59	The water course, broad	50	
22	The pine plantation, NE corner	20				09:45 Saturday
23	The road junction, 50m @ 150°, Water drop	20	60	The knoll	60	<b>Start</b>
24	The knoll	20	61	A clearing, 20m x 50m, south side	60	
25	The water course	20	62	The gully, on a fence	60	10:00 Saturday
26	The knoll, rocky	20	63	The southern gully	60	<b>Finish</b>
27	The dam, NW side	20	64	A saddle	60	
28	The watercourse/fence junction	20	65	The spur	60	22:00 Saturday
29	The track/watercourse junction, 60m @ 180° , Water drop	20	66	The gully, broad	60	<b>Hash House</b>
			67	The knoll	60	
30	The gully, broad	30	68	The spur	60	Opens at 16:00 Sat
31	The dam, 65m @ 340°	30	69	The spur	60	Closes by 23:00 Sat
32	The fence junction, 10m @ 270°	30				Opens at 7:00 Sun
33	The watercourse, head of	30	70	The water course, broad	70	Closes by 9:00 Sun
34	The water course/fence junction, 10m @ 0°	30	71	The watercourse	70	<b>Sunset</b>
35	The spur	30	72	The knoll, NW side	70	
36	The gully, broad	30	73	The water course	70	18:24:00
37	The water course	30	74	The watercourse, head of	70	<b>Moonrise</b>
38	The watercourse/track junction, 50m @ 270°, Water drop	30	75	The spur	70	
39	The knoll	30	76	The gully	70	21:23:00
			77	The eastern spur, rocky	70	<b>Water Drops: Controls</b>
40	The spur	40	78	A knoll, rocky	70	
41	The road junction, 100m @ 50° , Water drop	40				20,23,29,38,41,56
42	The watercourse, head of	40	80	The spur	80	<b>Patrolled Roads.</b>
43	The water course	40	81	A knoll, rocky	80	
44	The gully	40	82	The gully, east side of 50m x 60m rock surface	80	See roads indicated on the map.
45	The knoll	40	83	The water course	80	<b>Late Penalty</b>
46	The saddle	40	84	The spur, in boulder cluster	80	
47	The gully	40	85	The gully, broad, SE end of 50m x 60m clearing	80	10 points per minute or part minute.
48	The gully	40	86	The spur	80	LATE (no points) later than 2230 Saturday
49	The knoll	40				
			90	The knoll, broad	90	<b>Controls Used</b>
50	The spur	50	91	The spur	90	
51	The spur, rocky, east side of 5m boulder	50	92	A spur	90	76
52	The knoll, south side	50	93	The spur	90	<b>Total Points</b>
53	The dam, SE corner	50				
54	The gully	50	100	The spur	100	3880
			101	The spur	100	
<b>If you are injured make your way to a water drop or a patrolled road and wait there for help</b>			102	The gully	100	